

Closed Looped Cycle Production in the Americas



Organization of
American States



Program:



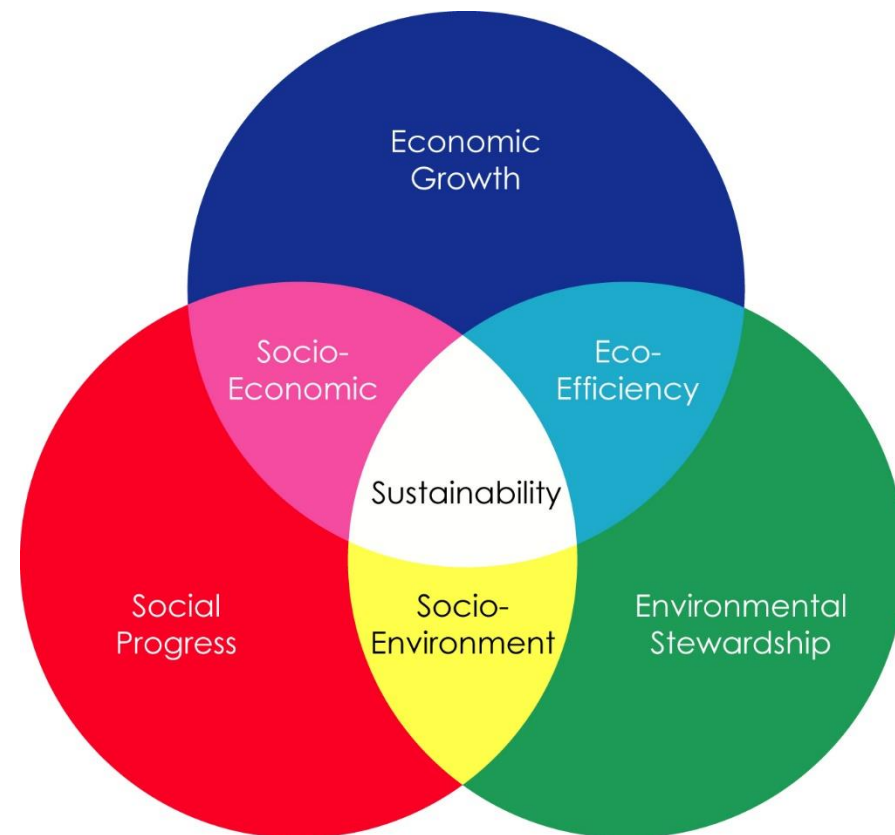
Closed Looped
Cycle Production
in the Americas

Facilitating the transition towards a circular economy

Program goal:

Facilitate the Transition toward Circular Economies in OAS Member States through the application of the Closed Looped Cycle Production design and manufacturing principles as means to achieve Sustainable Development in the Americas.

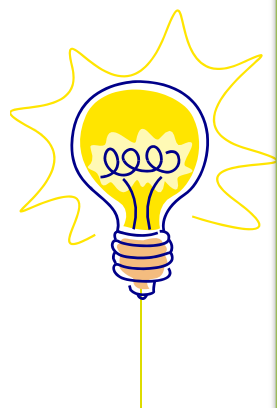
- (1) **Reduction** of dependency and continuous **extraction** of increasingly scarce commodities,
- (2) Significantly **lower energy and water requirements** and **GHG emissions** for manufacturing processes;
- (3) **Reduced solid waste, waste water generation** and other environmental impacts;
- (4) **Improved health** and working environment;
- (5) Promote **renewable energy** use during product processing, and
- (6) **Increased profits** for SMEs through cost savings and enhanced **marketability of products**.



Closed Looped Cycle Production in the Americas Program



Organization of American States



Request from the Ministry of Coordination of Production, Employment and Competitiveness



Ministry of Commerce, Industry and Tourism



Ministry of Commerce and Industry



Ministry of Planning and Sustainable Development



The initiative was conceived

National CLCP Program
 First Cradle-to-Cradle basic certified packaging product in Latin America and the Caribbean
 Clean Production Center for Ecuador
 Inclusion of dedicated text in the National Development Plan

- Sustainable Productive Development towards a Circular Economy in Colombia
- Development of Panama Green Label
- Finding a sustainable alternative packaging to replace the Styrofoam containers

* Over \$1.3 million invested



Bolt brand primary packaging granola bars from Batery Alimentos, S.A.



Primary Packaging
(polypropylene product)

Label Printing Machine for batch production ID, should be considered in energy balance/matrix from the company side (Responsible: Batery / Carlos Jacome)

Bolt brand secondary packaging (paperboard) granola bars from Batery Alimentos, S.A.



Label Printing Machine for batch production ID, should be considered in energy balance/matrix from the company side (Responsible: Batery / Carlos Jacome)

About the project:

The CLCP project in Ecuador responded to a request issued from the Ministry of Coordination of Production, Employment and Competitiveness (MCPEC) of the Government of Ecuador in 2010 to make the productive sector of Ecuador more efficient and competitive.

Steps of the project:

- I. Diagnostic Report of the Ecuadorian Production Sector, identification of donors and financial mechanisms to secure future funding.
- II. Pilot Project; institutional arrangements for its execution; building of capacities at a national level on the topic of Closed Looped Cycle Production; and dissemination of lessons learned in third countries.

Results:

- National Closed Looped Cycle Production Program
- First Cradle-to-Cradle® basic certified product in LAC
- Facilitate setup of Clean Production Center for Ecuador
- Inclusion of dedicated text in the National Development Plan “Plan para el Buen Vivir 2013-2017”



Seed Funding (2010)



FEMCIDI Partnership for Development Fund
Building Integral Development in the Americas



Step #1

Diagnostic Report of the Ecuadorian
Production Sector and Technical
Proposal (2010)

Pilot Project Funding (2011-2013)



United States Government



Step #2

Implement CLCP Pilot Project in
Ecuador (2011-2013)



Implementing Partners:



Centro Nacional de
Producción Más Limpia





Strategic Alliance:




1st Cradle to Cradle Certified Packaging in LAC region



Organization of American States

CRADLE TO CRADLE
PRODUCTS
INNOVATION
INSTITUTE

LICENSED BRAND:



CRADLE TO CRADLE CERTIFIED™ BASIC

THE LICENSED BRANDS IDENTIFIED ABOVE MAY BE LICENSED TO:
Batery Alimentos S.A.


FOR THE BELOW LISTED CERTIFIED PRODUCTS ASSOCIATED WITH THE NAME:
Bolt Energy Bar Paperboard Box Packaging

Only the following product (an associated Certified Product) within the scope of this certification and the associated Trademark License Agreement:

Batery Alimentos Bolt Energy Bar Paperboard Box Packaging (Secondary Packaging)

Assessor: Jay Bolus, McDonough Braungart Design Chemistry


ISSUE DATE: 13 March 2013
EXPIRES: 0778
REPIRATE DATE: 12 March 2014

Assessor: Jay Bolus, McDonough Braungart Design Chemistry 

Cradle to Cradle Version 2.1.1 of the Cradle to Cradle Certified™ Product Standard. Use of Licensed Brands is subject to terms and conditions of the CCPI's Trademark License Agreement and Trademark Use Guidelines. Cradle to Cradle Certified™ is a certification trademark owned by Cradle to Cradle Products Innovation Institute.

CRADLE TO CRADLE
PRODUCTS
INNOVATION
INSTITUTE

LICENSED BRAND:



CRADLE TO CRADLE CERTIFIED™ BASIC

THE LICENSED BRANDS IDENTIFIED ABOVE MAY BE LICENSED TO:
Batery Alimentos S.A.


FOR THE BELOW LISTED CERTIFIED PRODUCTS ASSOCIATED WITH THE NAME:
Bolt Energy Bar Laminate Packaging

Only the following product (an associated Certified Product) within the scope of this certification and the associated Trademark License Agreement:

Batery Alimentos Bolt Energy Bar Laminate Packaging

Assessor: Jay Bolus, McDonough Braungart Design Chemistry

ISSUE DATE: 13 March 2013
EXPIRES: 0784
REPIRATE DATE: 12 March 2014

Assessor: Jay Bolus, McDonough Braungart Design Chemistry 

Cradle to Cradle Version 2.1.1 of the Cradle to Cradle Certified™ Product Standard. Use of Licensed Brands is subject to terms and conditions of the CCPI's Trademark License Agreement and Trademark Use Guidelines. Cradle to Cradle Certified™ is a certification trademark owned by Cradle to Cradle Products Innovation Institute.

Bolt brand secondary packaging (paperboard) granola bars from Batery Alimentos, S.A.



Label Printing Machine for batch production ID, should be considered in energy balance/matrix from the company side (Responsible: Batery / Carlos Jacome)

Bolt brand primary packaging granola bars from Batery Alimentos, S.A.



Primary Packaging (polypropylene product)

Label Printing Machine for batch production ID, should be considered in energy balance/matrix from the company side (Responsible: Batery / Carlos Jacome)

CLCP Pilot Project Closing Ceremony (March, 2013)



Organization of
American States



QUITO, March 19, 2013
Award ceremony for the first C2C basic certification for a packaging product in Latin America and the Caribbean



 **Energy and Climate Partnership of the Americas**
Alianza de Energía y Clima de las Américas
Parceria em Energia e Clima das Américas
Partenariat des Amériques sur l'Énergie et le Climat

Participating Countries:

Uruguay

Objectives:

As part of the "Closed Loop Cycle Production in the Americas" initiative, introduce and showcase the viability and applicability of the C2C design method in the production system of Ecuador as an innovative business development tool that mainly improves energy efficiency and environmental performance in the industrial sector and to increase the productivity, competitiveness and sustainability of businesses, in particular small and medium size Enterprises (SMEs).

General Description:

The project is focused on identifying, introducing and applying the concepts of Closed Loop Cycle Production in the productive sector of Ecuador. This new paradigm also known as the "cradle-to-cradle" concept implies the development of industrial processes or of manufacture in which materials utilized become valuable nutrients upon reaching the end of their useful life. The model of Closed Loop Cycle Production does not only seek to rationalize the use of the materials and resources, but intends as important fundamental focus in the design of products and services.

Implementing Partners:



Closed Loop Cycle Production in the Americas

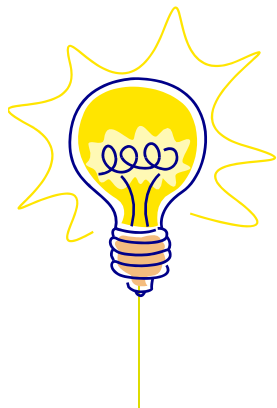


Ing. Nelson de Castro Bello
Project Manager
Closed Loop Cycle Production
Ecuador Institute of Technology & Development
Executive Director of the Integral Development
Organization of American States
19017 14-1116, Guayaquil, Ecuador
Tel: +593 95 950000
E-mail: nbelcastro@oas.org

Closed Looped Cycle Production in the Americas Program



Organization of American States



Request from the Ministry of Coordination of Production, Employment and Competitiveness



Ministry of Commerce, Industry and Tourism



Ministry of Commerce and Industry



Ministry of Planning and Sustainable Development



The initiative was conceived

- National CLCP Program
- First Cradle-to-Cradle basic certified packaging product in Latin America and the Caribbean
- Clean Production Center for Ecuador
- Inclusion of dedicated text in the National Development Plan

- Sustainable Productive Development towards a Circular Economy in Colombia
- Development of Panama Green Label
- Finding a sustainable alternative packaging to replace the Styrofoam containers

* Over \$1.3 million invested



Closed Looped Cycle Production in the Americas

Awareness Raising

Analysis and Policy Advice

Promote Application

Facilitating the transition towards a circular economy

Specific Objective:

Increased awareness and buy-in on the part of stakeholders in participating countries, of the relevance and viability of innovative Closed Looped Cycle Production design methods as means for **eco-intelligent** and **sustainable production** in companies, including small and medium sized enterprises.

- Increase awareness, knowledge, and collaboration among stakeholders (government, national enterprises, National Cleaner Production Centers (NCPC), Small Business Development Centers (SBDC) or chambers of commerce, etc.) about Closed Looped Cycle Production.

- Prepare and present position papers to stakeholders to facilitate high-level policy dialogue on economic and environmental benefits of sustainable design and closed-looped cycle production methods necessary for incentivizing and supporting MSMEs adoption of Closed Loop Cycle Production.

- Promote the application or adoption of Closed Looped Cycle Production methods (incl. Cradle-to-cradle, Cleaner Production, Sustainable Materials Management, or similar certifications and methods) by companies, in particular SMEs in participating countries



Program Funding – PHASE 1 (2013-2015)



Closed Looped
Cycle Production
in the Americas



Partners of the Program:





Strategic Alliances:



C2C-Centre

The leading Cradle to Cradle® knowledge platform



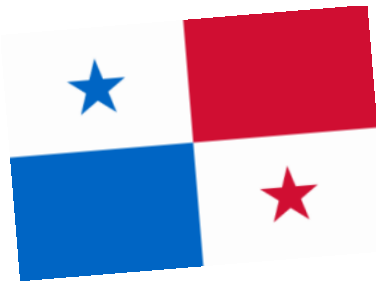


Closed Looped Cycle Production in the Americas 2013-2015



Productive Transformation
towards a Circular Economy

Ministry of Commerce, Industry and
Tourism



Development of Panama
Green Label

Ministry of Commerce and Industry

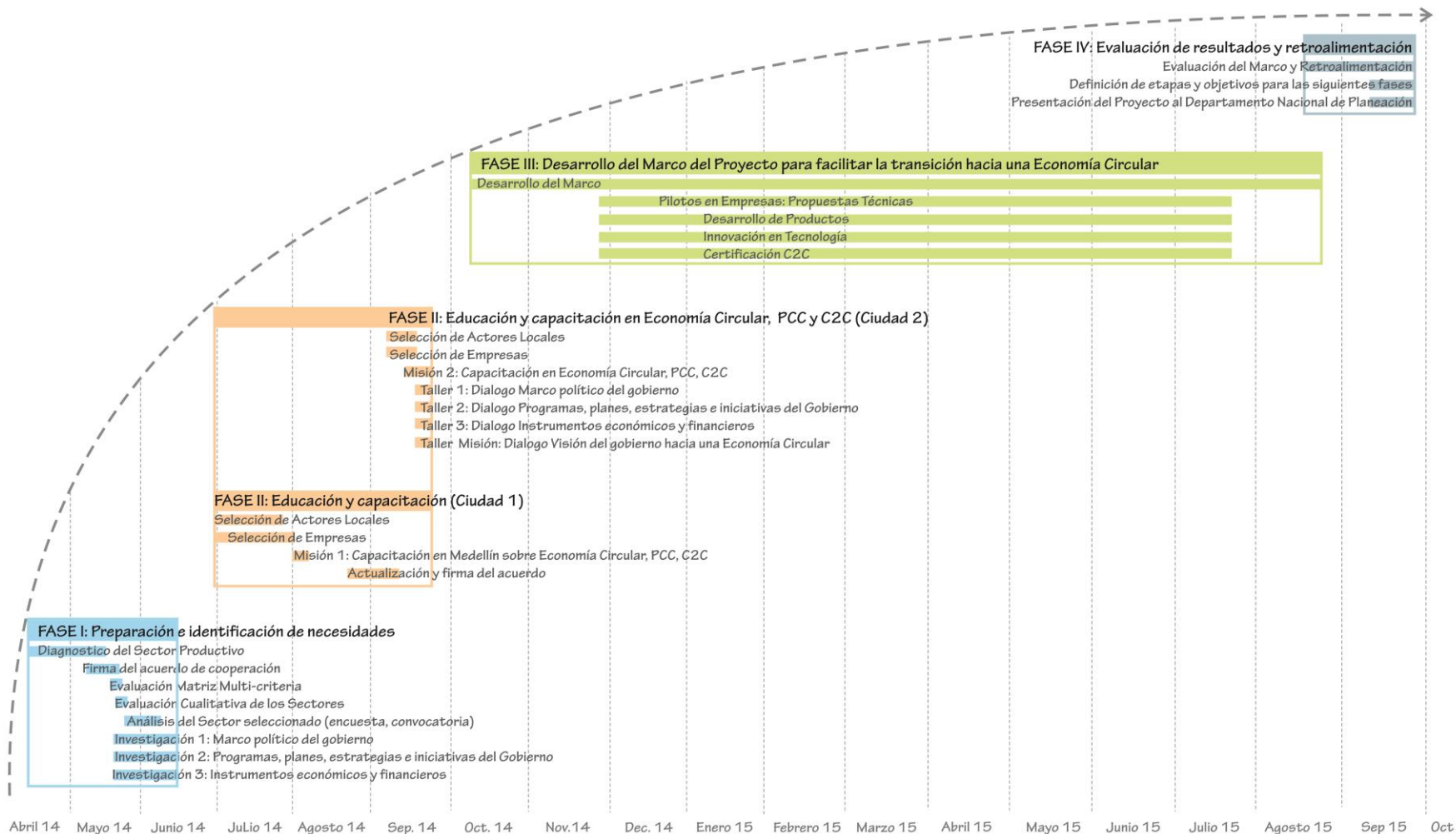


Finding a sustainable
alternative packaging to
replace the Styrofoam
containers

Ministry of Planning and Sustainable
Development



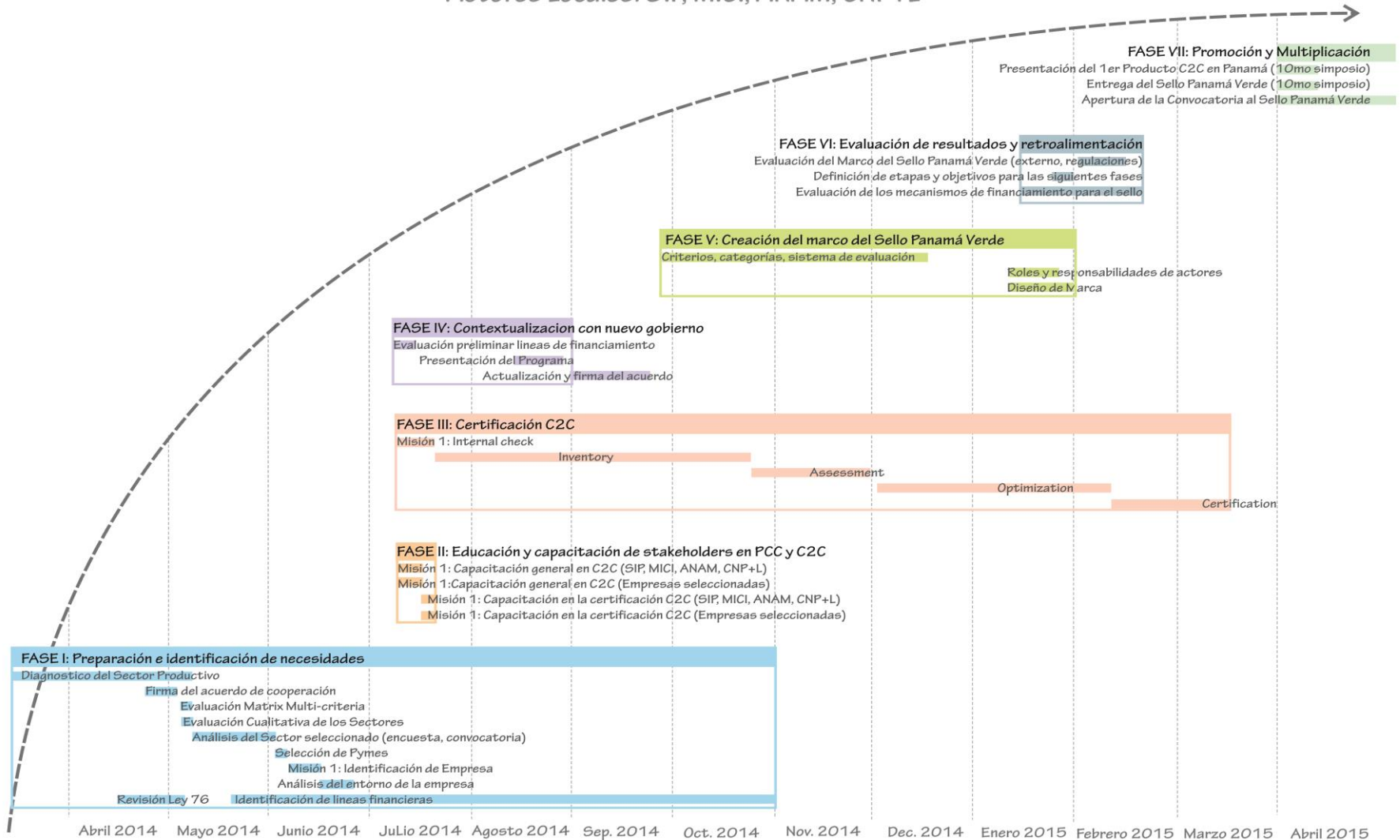
Desarrollo Productivo Sostenible hacia una Economía Circular en Colombia bajo el marco de Producción en Ciclo Cerrado en las Américas





Mapa de Ruta para el Desarrollo del Sello Panamá Verde

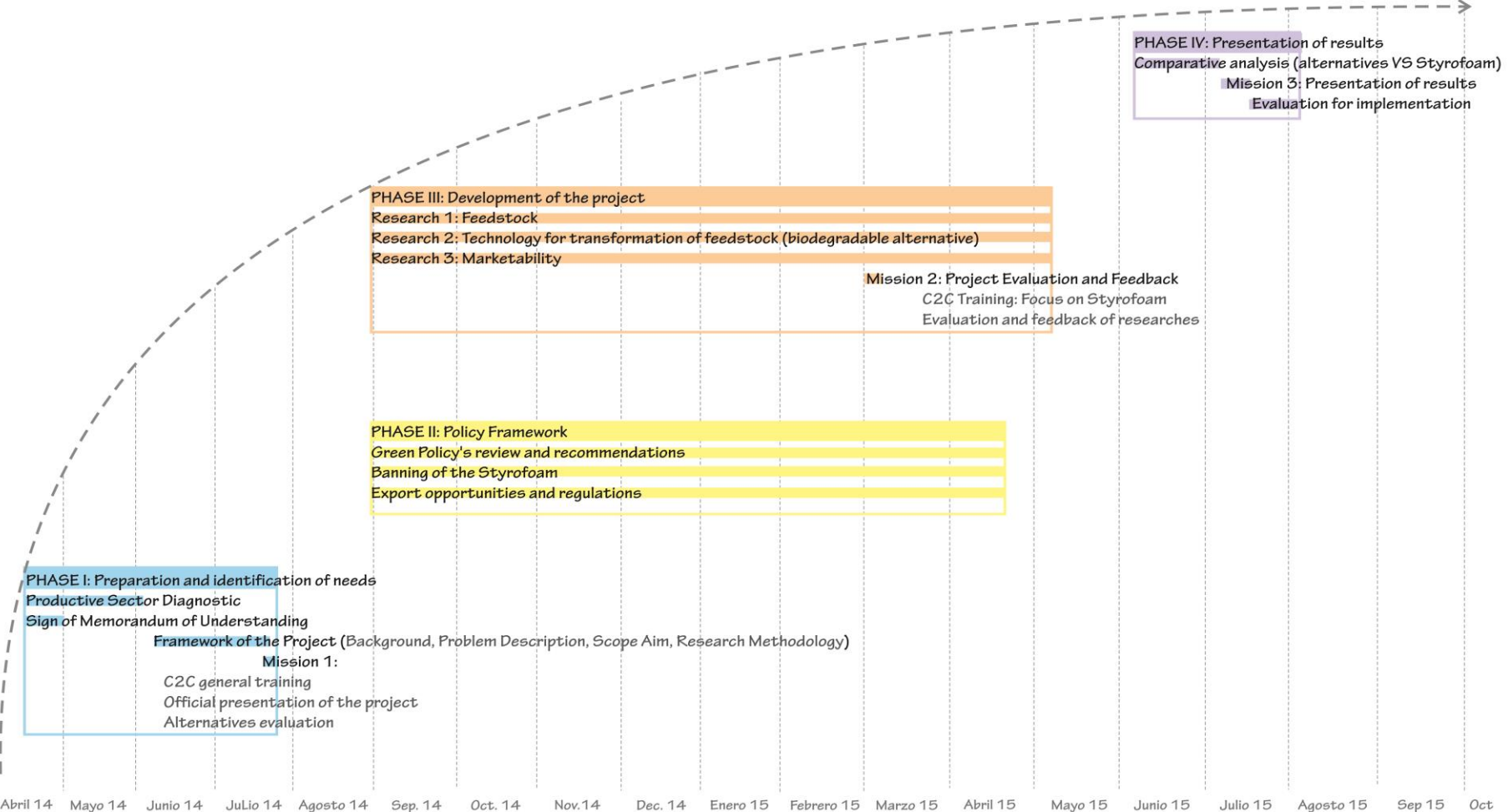
Actores Locales: SIP, MICI, ANAM, CNP+L





Roadmap CLCP Project in Trinidad and Tobago

Finding a sustainable alternative packaging to replace the Styrofoam containers produced within the Printing and Packaging Industry





Lima, Peru (03-06 December, 2013) - Under framework of LEDES Global Partnership co-hosted events at InterClima 2013.. Created awareness about Closed Looped Cycle Production design and production methods as tools for mitigation of climate change and increase climate change resilience in productive sectors.

Tuxtla Gutierrez, Mexico (08-09 May, 2014) - Presentation regarding C2C applications in Green Sustainable Buildings. Presented a research on Building Design, based on the Cradle to Cradle principles at the III Seminar on Innovation, Science and Technology for Energy Efficient Development: Green Sustainable Buildings held in Chiappas, Mexico.

Washington, D.C., USA (14 May, 2014) - 1st CLCP Informative Morning Session. An informative morning session was held among senior SEDI/DSD officials, Representatives of the Permanent Missions of Colombia, Panama and Trinidad and Tobago to the OAS, National Focal Points, and the Program Team about the objectives and status of the Closed Looped Cycle Production in the Americas Program

Guatemala City, Guatemala (18 July, 2014) - Presented the goals and objectives behind CLCPA initiative and create awareness on the topic of sustainable design and production processes among the members of the Guatemalan National Committee on Cleaner Production

Arequipa, Peru (19-22 October, 2014) - Showcased during two interactive workshops on the Closed Looped Cycle Production Principles, Methods and Experiences gained through the projects that are being carried out under the Program

Santiago, Chile (8-10 October, 2014) – CLCPA Participated in the Third regional LEDES LAC Workshop with emphasis on CLCP. Presentation that focused on the Closed Looped Cycle Production strategies to facilitate the transition to a circular economy that is also resilient to climate change

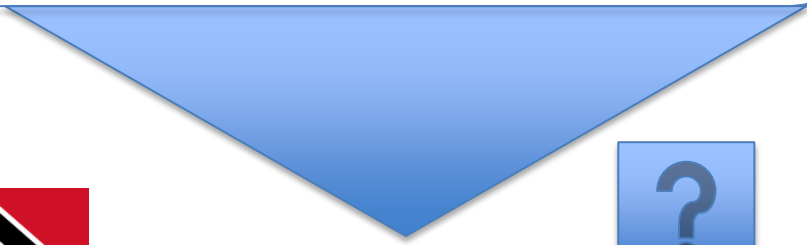
Future of the CLCPA Program?



Organization of American States



Antigua and Barbuda	Costa Rica	Haiti	Saint Lucia
Argentina	Cuba ¹	Honduras	Saint Vincent and the Grenadines
Barbados	Dominica (Commonwealth of)	Jamaica	Suriname
Belize	Dominican Republic	Mexico	The Bahamas (Commonwealth of)
Bolivia	Ecuador	Nicaragua	Trinidad and Tobago
Brazil	El Salvador	Panama	United States of America
Canada	Grenada	Paraguay	Uruguay
Chile	Guatemala	Peru	Venezuela (Bolivarian Republic of)
Colombia	Guyana	Saint Kitts and Nevis	



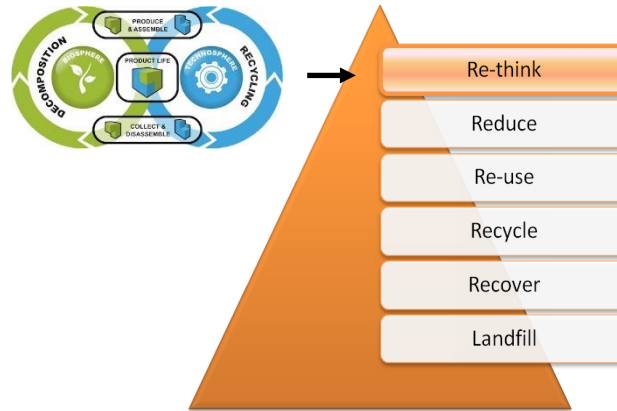


- ✓ **Function as Advisory Hub for OAS Member States addressing market barriers through Policy Making;**
 - ✓ Provide Awareness, Education, and Capacity Building to governments, private sector, academia and civil society in the Americas regarding closed loop cycle thinking;
 - ✓ Support and facilitate the establishment of Public-Private-Partnerships to start up implementation of projects and programs in line with Circular Economy principles;
 - ✓ Incentivize companies to start applying CLCP and Cradle to Cradle® design and manufacturing methods; and
 - ✓ Create awareness among consumers regarding sustainable designed and manufactured products.



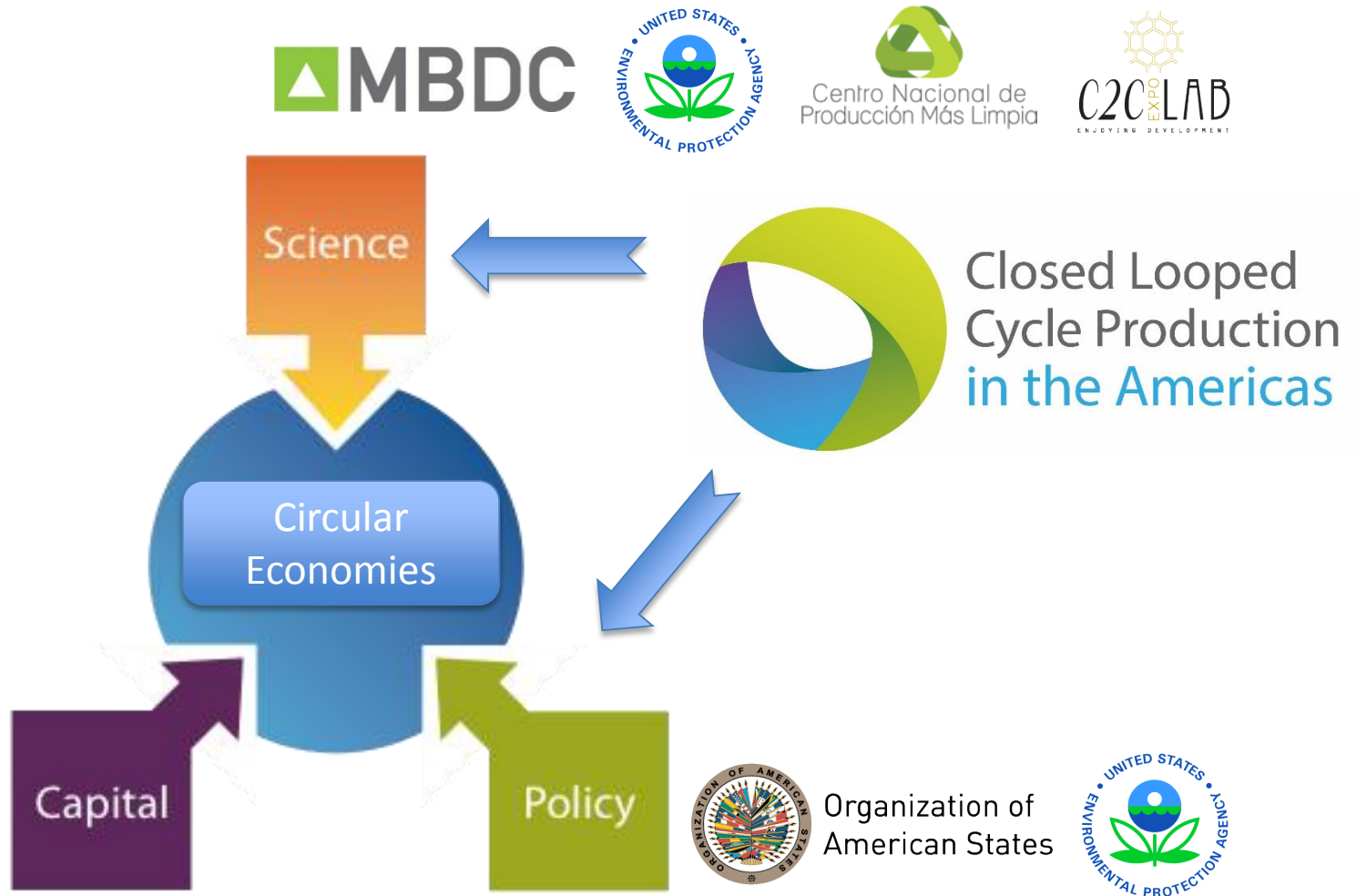
We believe that a real solution to waste problems in the Americas arises from:

- (1) Re-thinking the way we go about designing and manufacturing products and their use, as the starting point of finding a structural solution to waste generation; and
- (2) The inclusion or integration of closed loop cycle thinking into National Integrated Waste Management Policies/Plans that will facilitate the transition to Circular Economies.



Recognizing **Circular Economy** as the highest hierarchical goal in the Waste Management Hierarchy allows for:

Case-by-case situation assess the suitability of **Re-designing (Re-think), Reducing, Re-using, Recycling, Recovery (Waste-to-Energy solutions) and Responsible disposal (sanitary landfills)** as solution to address current and short-term waste problems, while simultaneously and gradually transitioning towards Sustainable Production and Consumption in communities throughout the Americas.



Thank you!



Organization of
American States



Contact Info



Organization of
American States

ing. Kevin de Cuba, MSc.

Program Manager

Closed Looped Cycle Production in the Americas

T: +1-202-370-4601

E: kdecuba@oas.org



Closed Looped
Cycle Production
in the Americas

Department of Sustainable Development - DSD
Executive Secretariat for Integral Development - SEDI

Organization of American States

1889 F St. N.W. Washington, D.C. 20006, USA

www.oas.org/dsd



Centro Nacional de
Producción Más Limpia



C2C EXPO LAB
ENJOYING DEVELOPMENT



United States
Environmental Protection
Agency

Director OAS/DSD

Cletus Springer

cspringer@oas.org

CLCPA Program Team:

Ruben Contreras

rcontreras@oas.org

Bibiana Serna

bserna@oas.org

Andrea Herrera

jaherrera@oas.org

Charlene Solozano

csolozano@oas.org

Rosy Arbieto

rarbieto@oas.org

Walter Araya

Walter_araya@hotmail.com

Juan Pablo Gemmell

jpgemmell@yahoo.com